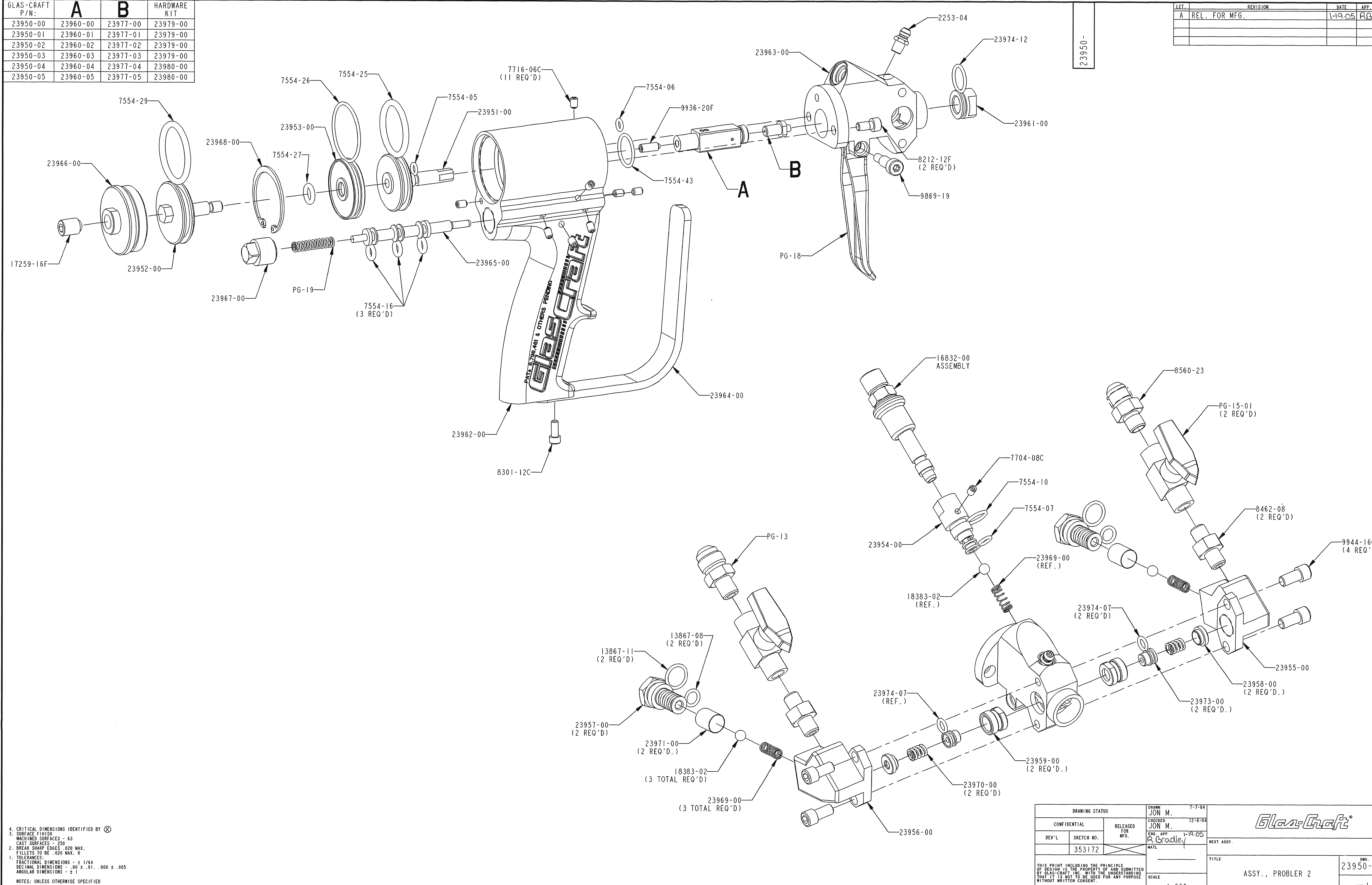


GLAS-CRAFT P/N:	A	B	HARDWARE KIT
23950-00	23960-00	23977-00	23979-00
23950-01	23960-01	23977-01	23979-00
23950-02	23960-02	23977-02	23979-00
23950-03	23960-03	23977-03	23979-00
23950-04	23960-04	23977-04	23980-00
23950-05	23960-05	23977-05	23980-00

LET.	REVISION	DATE	APP.
A	REL. FOR MFG.	1-19-05	RJB



4. CRITICAL DIMENSIONS IDENTIFIED BY ⊗
3. SURFACE FINISH
MACHINED SURFACES - 63
CAST SURFACES - 250
2. BREAK SHARP EDGES .020 MAX.
FILLETS TO BE .020 MAX. R
1. TOLERANCES:
FRACTIONAL DIMENSIONS - ± 1/64
DECIMAL DIMENSIONS - .00 ± .01, .000 ± .005
ANGULAR DIMENSIONS - ± 1°
NOTES: UNLESS OTHERWISE SPECIFIED

DRAWING STATUS		7-7-04	
CONFIDENTIAL	RELEASED FOR MFG.	12-8-04	
DEV'L	SKETCH NO.	353172	
<small>THIS PRINT INCLUDING THE PRINCIPLE OF DESIGN IS THE PROPERTY OF AND SUBMITTED BY GLAS-CRAFT, INC. WITH THE UNDERSTANDING THAT IT IS NOT TO BE USED FOR ANY PURPOSE WITHOUT WRITTEN CONSENT.</small>		SCALE	1.000
<small>DRWN: JON M. 7-7-04 CHECKED: JON M. 12-8-04 ENG. APP: R. Bradley 1-19-05 MATERIAL</small>			TITLE
<small>DEV'L</small>			ASSY., PROBLER 2
<small>DATE</small>			DWG. NO. 23950-00
<small>SCALE</small>			SHT. 1 of 1