

GAP Pro Spray Gun

Parts Identification Manual 36943-ID

February 26, 2004

Issue 1

GUSMER CORPORATION®

A Subsidiary of Gusmer Machinery Group, Inc.
One Gusmer Drive

Lakewood, New Jersey, USA 08701-8055

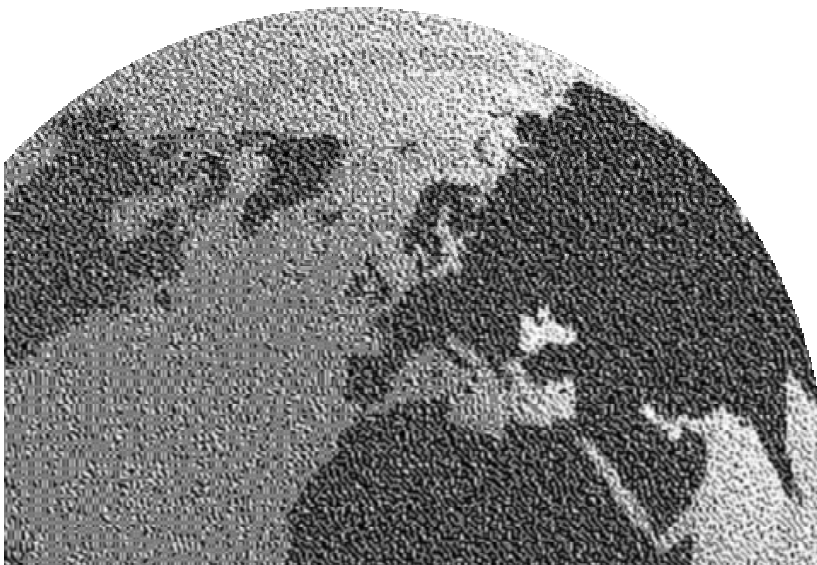
Toll Free 1-800-367-4767 (USA & Canada)

Phone: (732) 370-9000

Fax: (732) 905-8968

Copyright 2004, GUSMER CORPORATION®

<http://www.gusmer.com>



NOTICE: This manual contains important information about your GUSMER equipment. Read and retain for future reference.

***NOTICE:** The equipment described in this technical manual must only be operated or serviced by properly trained individuals, thoroughly familiar with the operating instructions and limitations of the equipment. For technical service, call your local distributor. Call: 1-800-FOR-GSMR (1-800-367-4767) for the name and telephone number of your local distributor.*

***NOTICE:** All statements, information and data given herein are believed to be accurate and reliable but are presented without guarantee, warranty or responsibility of any kind expressed or implied. Statements or suggestions concerning possible use of GUSMER equipment are made without representation or warranty that any such use is free of patent infringement, and are not recommendations to infringe any patent. The user should not assume that all safety measures are indicated or that other measures may not be required.*

CONTENTS

LIST OF FIGURES.....4

LIST OF TABLES.....4

WARRANTY5

GAP PRO SPRAY GUN ASSEMBLIES.....6

 FINAL ASSEMBLY6

 HANDLE ASSEMBLY8

 STANDARD SPRAY TIP ASSEMBLIES10

Round Spray Pattern Components.....10

Flat Spray Pattern Components.....11

 OPTIONAL SPRAY TIP ASSEMBLIES12

Pattern Control Disc (PCD) Fan Spray Components.....12

Spatter Spray Components.....13

Static Mixer Components.....14

Pour Package Components.....15

GAP Wand Components16

APPENDIX.....17

NOTES.....18

INSTRUCTION MANUAL DISCREPANCY REPORT.....19

LIST OF FIGURES

FIGURE 1. FINAL ASSEMBLY (PART NO. 35100-SIZE), EXPLODED VIEW	6
FIGURE 2. HANDLE ASSEMBLY (PART NO. 35111), EXPLODED VIEW	8
FIGURE 3. ROUND SPRAY TIP ASSEMBLY, EXPLODED VIEW	10
FIGURE 4. FLAT SPRAY TIP ASSEMBLY, EXPLODED VIEW	11
FIGURE 5. PATTERN CONTROL DISC (PCD) FAN SPRAY ASSEMBLY, EXPLODED VIEW	12
FIGURE 6. SPATTER SPRAY ASSEMBLY (PART NO.35100-F-04-S), EXPLODED VIEW	13
FIGURE 7. STATIC MIXER ASSEMBLY (PART NO. OP35220-1-PKG / OP35220-3-PKG), EXPLODED VIEW	14
FIGURE 8. POUR PACKAGE ASSEMBLY (PART NO. OP35230-1-PKG), EXPLODED VIEW.....	15
FIGURE 9. GAP WAND ASSEMBLY (PART NO. OP35330-21-PKG), EXPLODED VIEW	16

LIST OF TABLES

TABLE 1. FINAL ASSEMBLY (PART NO. 35100-SIZE), PARTS.....	7
TABLE 2. HANDLE ASSEMBLY (PART NO. 35111), PARTS.....	9
TABLE 3. ROUND SPRAY TIP ASSEMBLY, PARTS.....	10
TABLE 4. FLAT SPRAY TIP ASSEMBLY, PARTS	11
TABLE 5. FLAT SPRAY TIPS	11
TABLE 6. PATTERN CONTROL DISC (PCD) FAN SPRAY ASSEMBLY, PARTS	12
TABLE 7. PATTERN CONTROL DISCS (PCD).....	12
TABLE 8. SPATTER SPRAY ASSEMBLY (PART NO.35100-F-04-S), PARTS	13
TABLE 9. STATIC MIXER ASSEMBLY (PART NO. OP35220-1-PKG / OP35220-3-PKG), PARTS.....	14
TABLE 10. POUR PACKAGE ASSEMBLY (PART NO. OP35230-1-PKG), PARTS	15
TABLE 11. GAP WAND ASSEMBLY (PART NO. OP35330-21-PKG), PARTS	16
TABLE 12. MIXING CHAMBER CLEAN OUT DRILL SPECIFICATIONS.....	17

WARRANTY

Gusmer Corporation (Gusmer) provides a limited warranty to the original purchaser (Customer) of Gusmer manufactured parts and equipment (Product) against any defects in material or workmanship for a period of one year from the date of shipment from Gusmer facilities.

In the event Product is suspected to be defective in material or workmanship, it must be returned to Gusmer, freight prepaid. If Product is found to be defective in material or workmanship, as determined solely by Gusmer, Gusmer will issue full credit to Customer for the freight charges incurred in returning the defective Product, and either credit will be issued for the replacement cost of the Product or a replacement part will be forwarded no-charge, freight prepaid to Customer.

This warranty shall not apply to Product Gusmer finds to be defective resulting from: installation, use, maintenance, or procedures not accomplished in accordance with our instructions; normal wear; accident; negligence; alterations not authorized in writing by Gusmer; use of "look alike" parts not manufactured or supplied by Gusmer; or Product used in conjunction with any other manufacturer's pumping or proportioning equipment. For such Product, a written estimate will be submitted to the Customer at a nominal service charge, itemizing the cost for repair. Disposition of Product will be done in accordance with the terms stated on the written estimate.

The warranty provisions applied to product that are not manufactured by Gusmer will be solely in accordance with the warranty provided by the original manufacturer of the product.

GUSMER MAKES NO WARRANTY WHATSOEVER AS TO THE MERCHANTABILITY OF, OR SUITABILITY FOR, ITS PRODUCT TO PERFORM ANY PARTICULAR PURPOSE. CREDIT FOR, OR REPLACEMENT OF, PRODUCT DEFECTIVE IN MATERIAL OR WORKMANSHIP SHALL CONSTITUTE COMPLETE FULFILLMENT OF GUSMER OBLIGATIONS TO CUSTOMER. NO OTHER WARRANTY, EXPRESS OR IMPLIED ON ANY PRODUCT IT MANUFACTURES AND/OR SELLS, WILL BE RECOGNIZED BY GUSMER UNLESS SAID WARRANTY IS IN WRITING AND APPROVED BY AN OFFICER OF GUSMER.

Under no circumstances shall Gusmer be liable for loss of prospective or speculative profits, or special indirect, incidental or consequential damages. Further, Gusmer shall have no liability for any expenses including, but not limited to personal injury or property damage resulting from failure of performance of the product, use of the product, or application of the material dispensed through the product. Any information provided by Gusmer that is based on data received from a third source, or that pertains to product not manufactured by Gusmer, while believed to be accurate and reliable, is presented without guarantee, warranty, or responsibility of any kind, express or implied.

Gusmer through the sale, lease, or rental of Product in no way expresses or implies a license for the use of, nor encourages the infringement of any patents or licenses.

To ensure proper validation of your warranty, please complete the warranty card and return it to Gusmer within two weeks of receipt of equipment.

Revised 09/02

GAP PRO SPRAY GUN ASSEMBLIES

FINAL ASSEMBLY

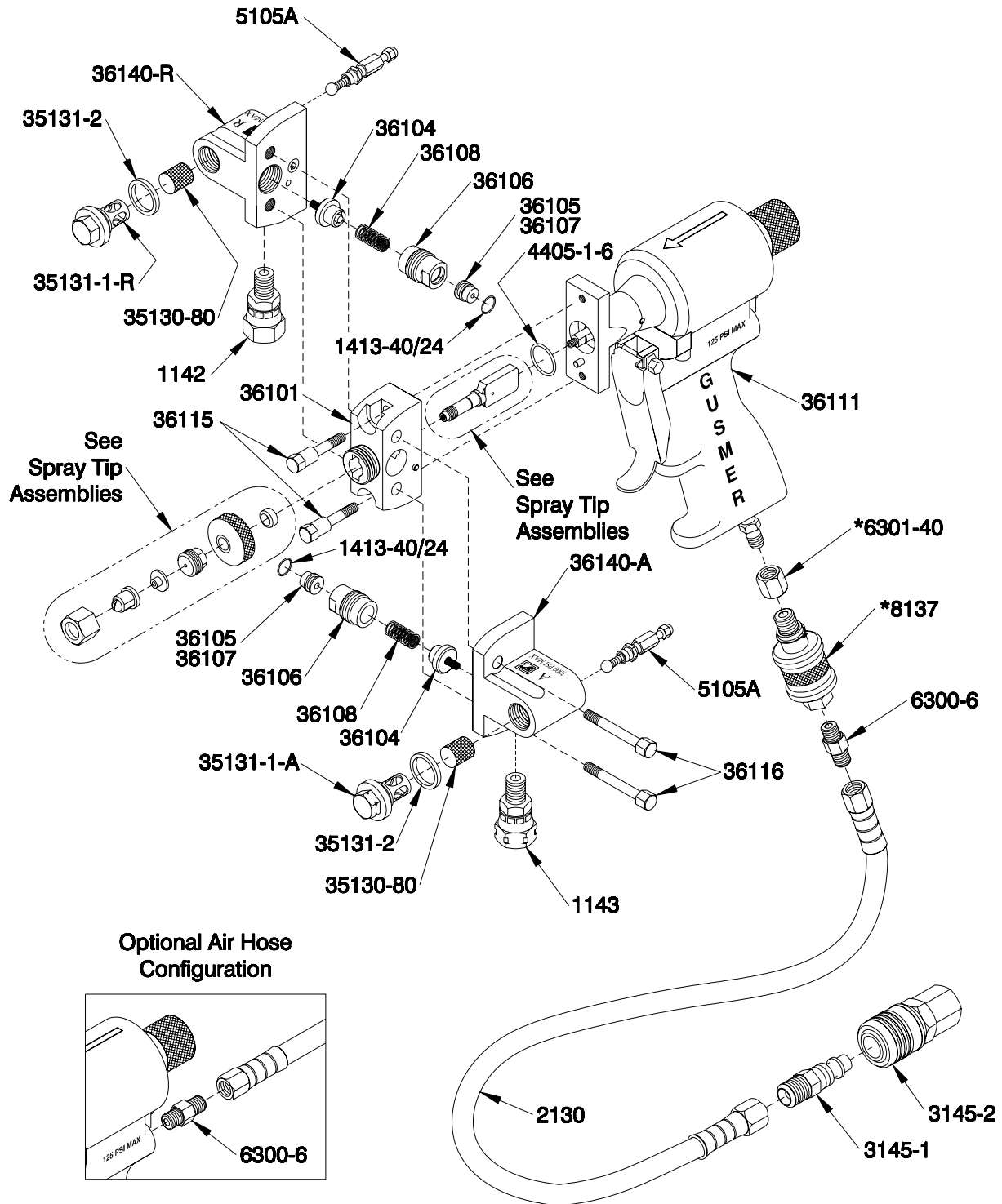


Figure 1. Final Assembly (Part No. 36100-SIZE), Exploded View

TABLE 1. FINAL ASSEMBLY (PART NO. 36100-SIZE), PARTS

Part Number	Description	Quantity
1142	R-Swivel Fitting	1
1143	A-Swivel Fitting	1
1413-40/24	O-Ring	2
2130	Air Hose	1
3145-1	Coupler Plug	1
3145-2	Coupler	1
4405-1-6	O-Ring	1
5105A	Manual Valve Assembly	2
16111-13	Pipe Nipple (<i>See Operating Manual for installation instructions</i>)	1
35130-80	Screen-80 Mesh	2
35131-1-A	A- Screen Screw	1
35131-1-R	R- Screen Screw	1
35131-2	Screen Screw Seal	2
36101	Gun Block	1
36104	Check Valve Assembly	2
36105	Side Seal (<i>See Spray Tip Assemblies for proper size.</i>)	2
36107	Side Seal (<i>See Spray Tip Assemblies for proper size.</i>)	2
36106	Seal Assembly Insert	2
36108	Spring	2
36111	Gun Handle Assembly	1
36115	Gun Block Bolt	2
36116	Side Block Bolt	2
36140-A	A- Side Block (<i>Includes 1143 and 5105A</i>)	1
36140-R	R- Side Block (<i>Includes 1142 and 5105A</i>)	1

NOTE: See Spray Tip Assemblies for Standard Sizes and Configurations

Optional Equipment (Included)		
6300-6	Hex Nipple	1
Optional Equipment (Not Included)		
*6301-40	Coupler	1
*8137	Air Slide Valve	1

**Part of Gap Air Slide Valve Package (Part No. OP35240-1-PKG).*

HANDLE ASSEMBLY

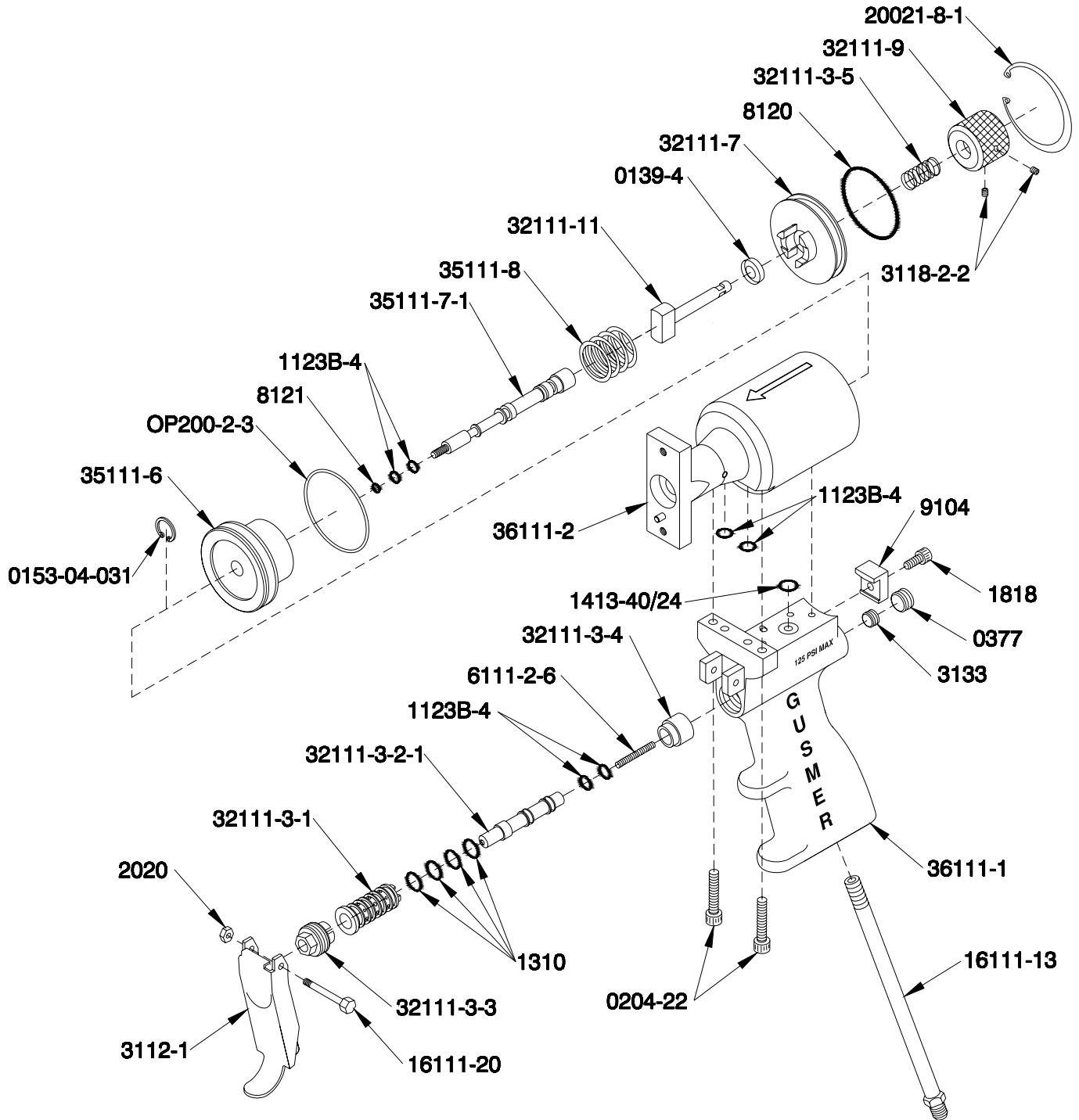


Figure 2. Handle Assembly (Part No. 36111), Exploded View

TABLE 2. HANDLE ASSEMBLY (PART NO. 36111), PARTS

Part Number	Description	Quantity
◆ 0139-4	U-Cup Seal	1
0153-04-031	Retainer Ring	1
0204-22	Socket Head Cap Screw	2
0377	Pipe Plug	1
◆ • 1123B-4	O-Ring	6
• 1310	O-Ring	4
◆ 1413-40/24	O-Ring	1
1818	Socket Head Cap Screw	
2020	Lock Nut	1
3112-1	Spray Gun Trigger	1
3118-2-2	Socket Head Set Screw	2
3133	Pipe Plug	1
• 6111-2-6	Air Valve Spring	1
◆ 8120	O-Ring	1
◆ 8121	O-Ring	1
9104	Cylinder Clamp	1
16111-13	Pipe Nipple	1
16111-20	Trigger Mounting Screw	1
20021-8-1	Truarc	1
32111-11	Stop Pin	1
32111-3-1	Valve Liner	1
32111-3-2-1	Valve Spool	1
32111-3-3	Valve Retainer Nut	1
32111-3-4	Spring Seat	1
32111-3-5	Stop Spring	1
32111-7	End-Cap	1
32111-9	Stop Knob	1
36111-1	Gun Handle	1
35111-6	Piston	1
35111-7-1	Piston Shaft Assembly	1
35111-8	Spring	1
36111-2	Air Cylinder	1
◆ OP200-2-3	O-Ring	1

◆ *Air Cylinder Rebuild Kit (Part No. 35113-1)*

• *Trigger Rebuild Kit (Part No. 32123-1)*

STANDARD SPRAY TIP ASSEMBLIES

Round Spray Pattern Components

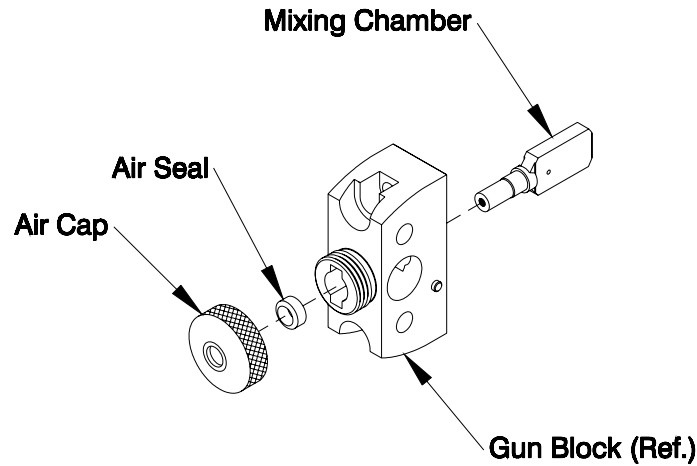


Figure 3. Round Spray Tip Assembly, Exploded View

TABLE 3. ROUND SPRAY TIP ASSEMBLY, PARTS

Output (lbs./min.)	Mixing Chamber Assembly	Mixing Chamber Only *	Air Seal Only *	Air Cap	Side Seal (See Figure 1)
3-6	36160-R-00	36160-1-R-00	35160-3-1-R	35184-1-R	36105
5-9	36160-R-01	36160-1-R-01	35160-3-1-R	35184-1-R	36105
10-20	36160-R-02	36160-1-R-02	35160-3-1-R	35184-1-R	36105
12-30	36160-R-03	36160-1-R-03	35160-3-1-R	35184-1-R	36105
20-45	36160-R-04	36160-1-R-04	35160-3-2-R	35184-2-R	36107
30-60	36160-R-05	36160-1-R-05	35160-3-2-R	35184-2-R	36107

** Included in Mixing Chamber Assembly.*

NOTE: *The above specifications are based upon in-house test data, which may vary depending upon the specific chemical system, application, and Mixing Chamber.*

Flat Spray Pattern Components

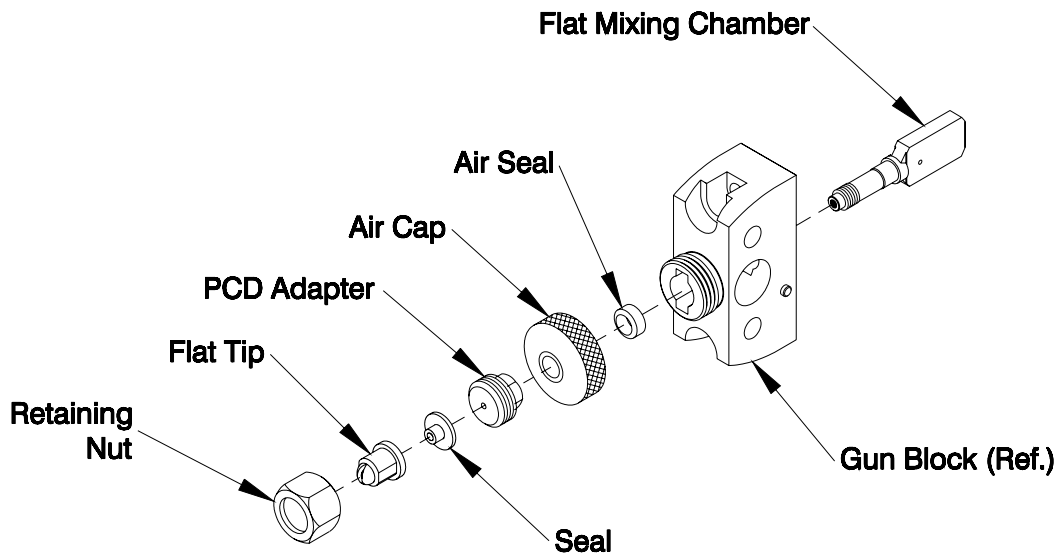


Figure 4. Flat Spray Tip Assembly, Exploded View

TABLE 4. FLAT SPRAY TIP ASSEMBLY, PARTS

Output (lbs./min.)	Mixing Chamber Assembly	Mixing Chamber Only *	Air Seal Only *	Air Cap	Adapter	Seal	Retaining Nut	Side Seal (See Figure 1)
3-6	36160-F-00	36160-1-F-00	35160-3-1-F	35184-1-F	35183-1	35185	35181	36105
5-9	36160-F-01	36160-1-F-01	35160-3-1-F	35184-1-F	35183-1	35185	35181	36105
10-20	36160-F-02	36160-1-F-02	35160-3-1-F	35184-1-F	35183-1	35185	35181	36105
12-30	36160-F-03	36160-1-F-03	35160-3-1-F	35184-1-F	35183-1	35185	35181	36105
20-45	36160-F-04	36160-1-F-04	35160-3-1-F	35184-1-F	35183-2	35185	35181	36107
30-60	36160-F-05	36160-1-F-05	35160-3-1-F	35184-1-F	35183-2	35185	35181	36107

** Included in Mixing Chamber Assembly.*

NOTE: *The above specifications are based upon in-house test data, which may vary depending upon the specific chemical system, application, and Mixing Chamber.*

TABLE 5. FLAT SPRAY TIPS

Part Number	Spray Width*
35182-1	10-14" @ 1500psi
35182-2	12-16" @ 1500psi
35182-3	16-19" @ 1500psi

** Approximately 20" from the surface.*

OPTIONAL SPRAY TIP ASSEMBLIES

Pattern Control Disc (PCD) Fan Spray Components

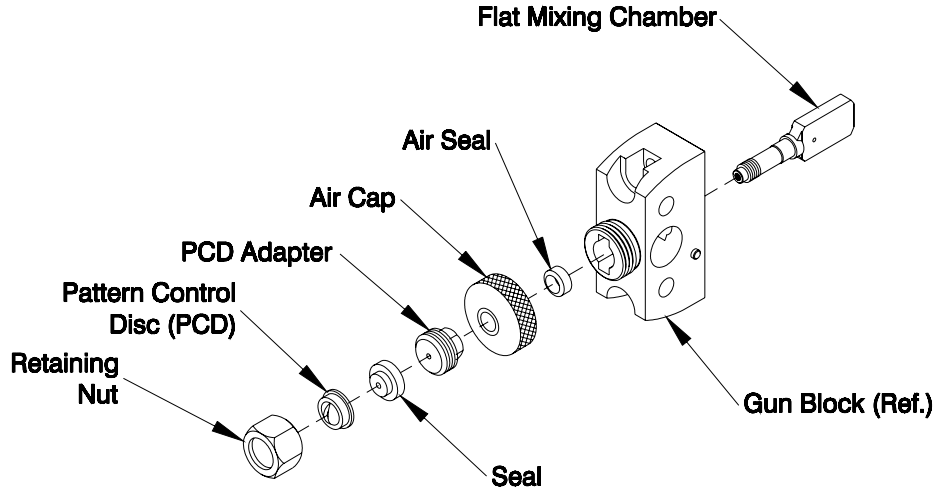


Figure 5. Pattern Control Disc (PCD) Fan Spray Assembly, Exploded View

TABLE 6. PATTERN CONTROL DISC (PCD) FAN SPRAY ASSEMBLY, PARTS

Output (lbs./min.)	Mixing Chamber Assembly	Mixing Chamber Only *	Air Seal Only *	Air Cap	PCD Adapter	Seal	Retaining Nut	Side Seal (See Figure 1)
3-6	36160-F-00	36160-1-F-00	35160-3-1-F	35184-1-F	35193-1	35195-1	35191	36105
5-9	36160-F-01	36160-1-F-01	35160-3-1-F	35184-1-F	35193-1	35195-1	35191	36105
10-20	36160-F-02	36160-1-F-02	35160-3-1-F	35184-1-F	35193-1	35195-1	35191	36105
12-30	36160-F-03	36160-1-F-03	35160-3-1-F	35184-1-F	35193-1	35195-1	35191	36105
20-45	36160-F-04	36160-1-F-04	35160-3-1-F	35184-1-F	35193-2	35195-2	35191	36107
30-60	36160-F-05	36160-1-F-05	35160-3-1-F	35184-1-F	35193-2	35195-2	35191	36107

*Included in Mixing Chamber Assembly.

NOTE: The above specifications are based upon in-house test data, which may vary depending upon the specific chemical system, application, and Mixing Chamber.

TABLE 7. PATTERN CONTROL DISCS (PCD)

Part Number	Spray Width*
16282-202-A	10-14" @ 1500psi
16282-208-A	9-13" @ 1500psi
16282-212-A	10-14" @ 1500psi

* Approximately 20" from the surface.

Spatter Spray Components

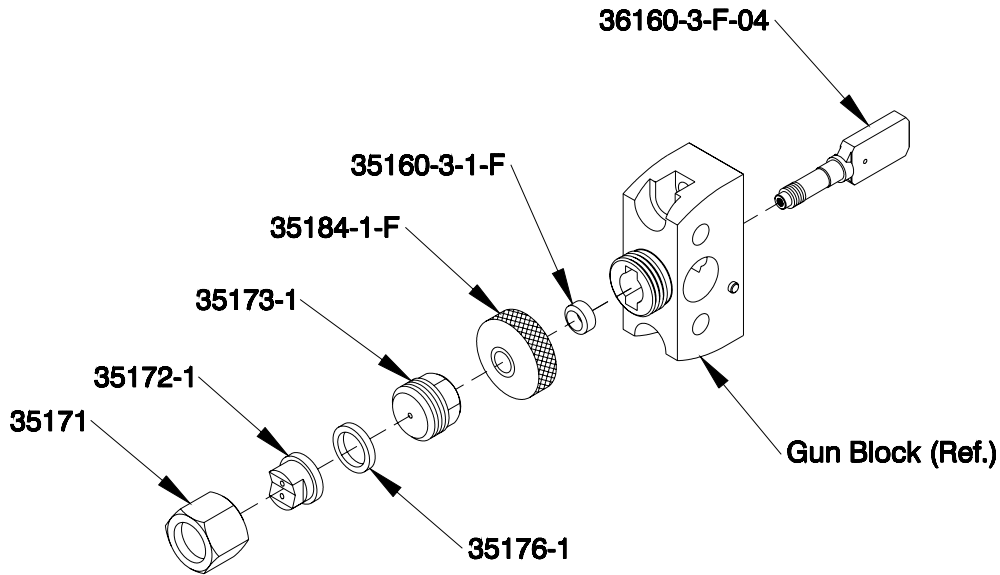


Figure 6. Spatter Spray Assembly (Part No.36100-F-04-S), Exploded View

TABLE 8. SPATTER SPRAY ASSEMBLY (PART NO.36100-F-04-S), PARTS

Part Number	Description	Quantity
36107	Side Seal <i>(Not Shown)</i>	2
36160-1-F-04	Flat Mixing Chamber	1
35160-3-1-F	Air Seal	1
35171	Retaining Nut	1
35172-1	Spatter Flat Tip	1
35173-1	Adapter	1
35176-1	Seal	1
35184-1-F	Air Cap	1

Output: 14-22 lbs./min.

Static Mixer Components

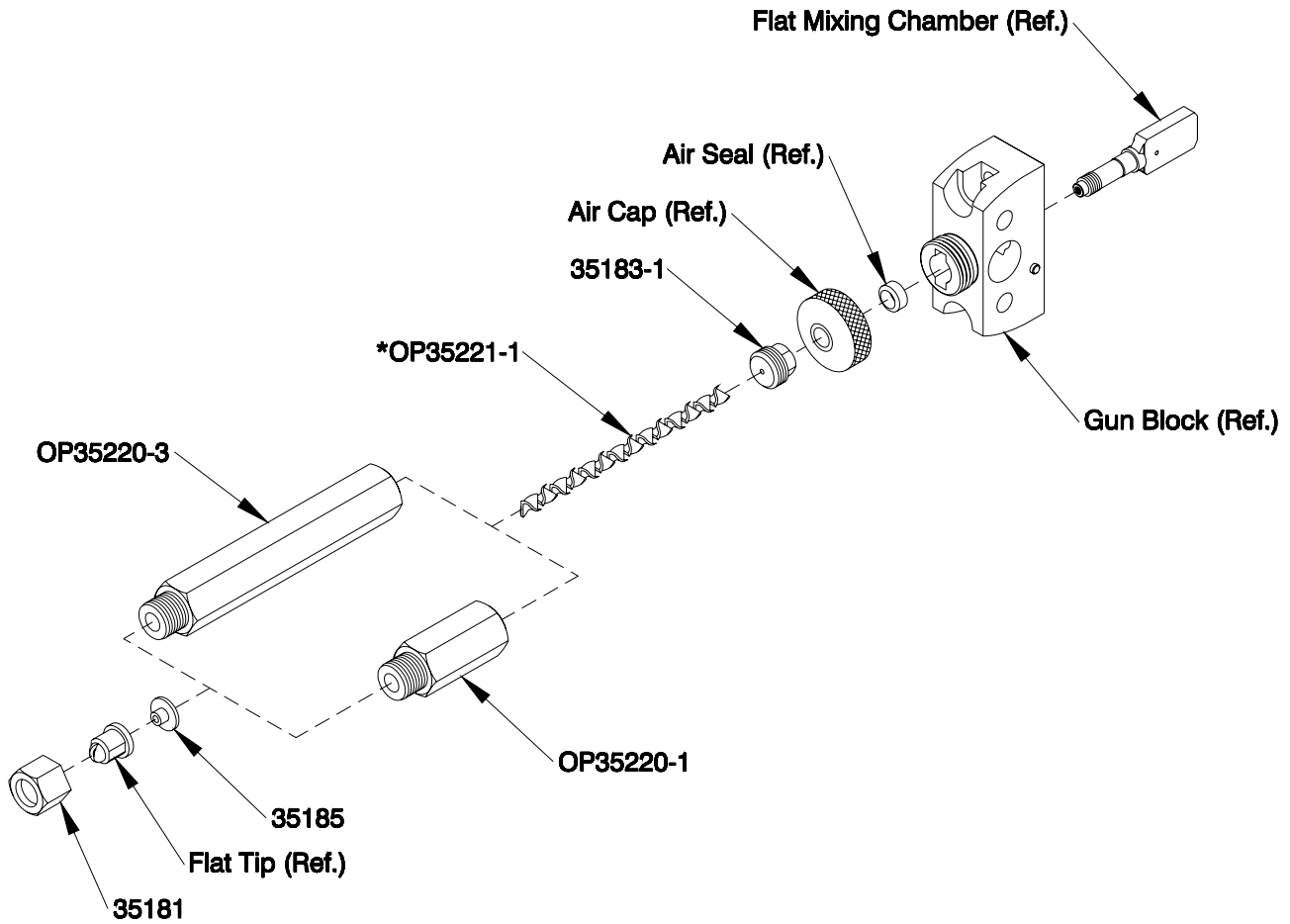


Figure 7. Static Mixer Assembly (Part No. OP35220-1-PKG / OP35220-3-PKG), Exploded View

TABLE 9. STATIC MIXER ASSEMBLY (PART NO. OP35220-1-PKG / OP35220-3-PKG), PARTS

Part Number	Description	Quantity
35181	Retaining Nut	1
35183-1	Adapter	1
35185	Seal	1
OP35220-1	1" Static Chamber	1
OP35220-3	3" Static Chamber	1
*OP35221-1	Mixing Element	2

** Mixing Element must be cut to length to fit in the appropriate Static Chamber.*

Pour Package Components

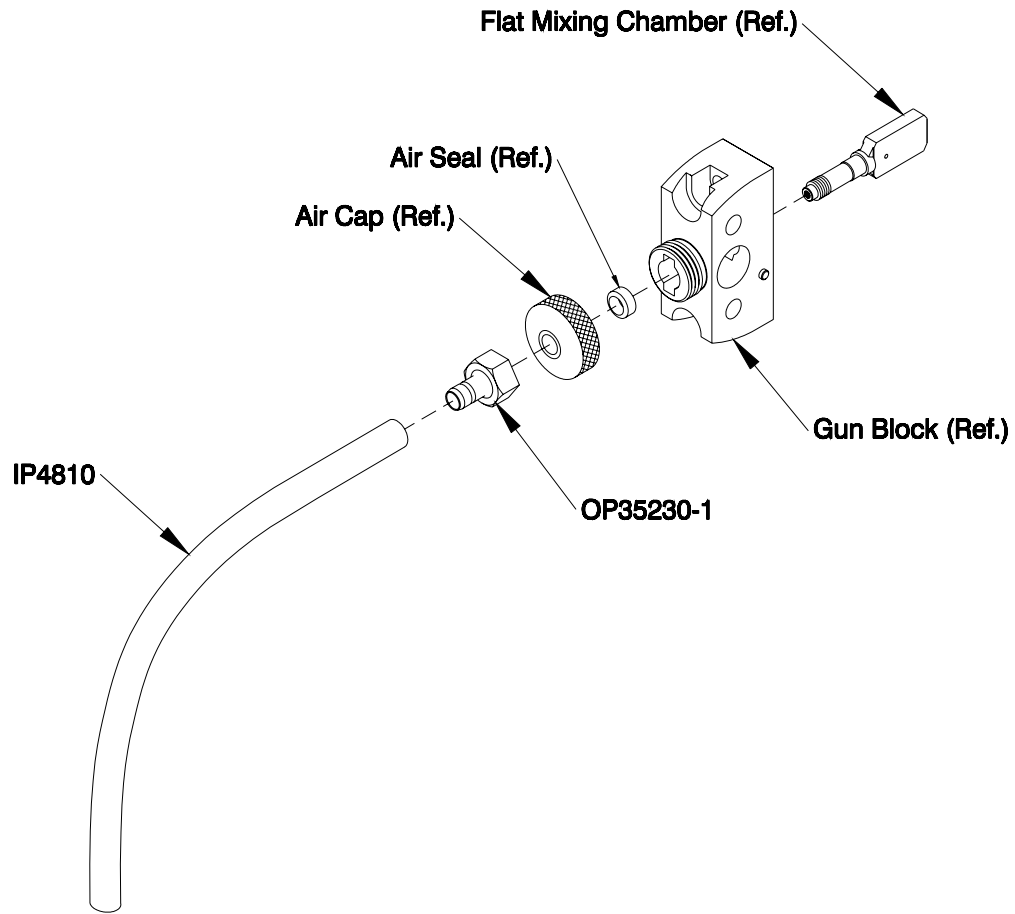


Figure 8. Pour Package Assembly (Part No. OP35230-1-PKG), Exploded View

TABLE 10. POUR PACKAGE ASSEMBLY (PART NO. OP35230-1-PKG), PARTS

Part Number	Description	Quantity
OP35230-1	Pour Fitting	1
IP4810	Polyflow Tubing (1foot length)	1

GAP Wand Components

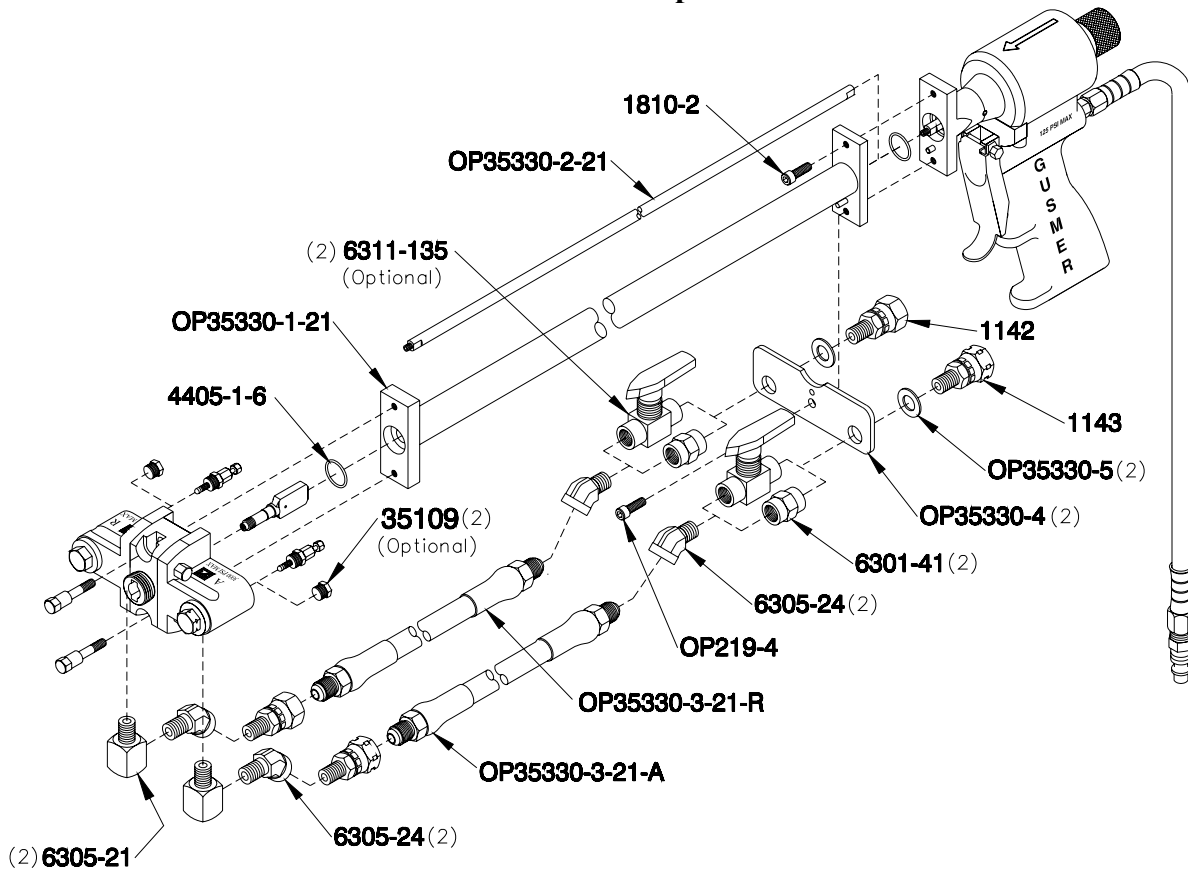


Figure 9. GAP Wand Assembly (Part No. OP35330-21-PKG), Exploded View

TABLE 11. GAP WAND ASSEMBLY (PART NO. OP35330-21-PKG), PARTS

Part Number	Description	Quantity
1143	A-Swivel Fitting	1
1142	R-Swivel Fitting	1
1810-2	Socket Head Cap Screw	1
4405-1-6	O-Ring	1
6301-41	Coupler	2
6305-21	Extension Street Elbow	2
6305-24	45° Street Elbow	4
6311-135	Ball Valve (<i>Optional</i>)	2
35109	Plug (<i>Optional</i>)	2
OP219-4	Socket Head Cap Screw	1
OP35330-1-21	Tube Weldment	1
OP35330-2-21	Rod Assembly	1
OP35330-3-21-A	Iso Hose Assembly	1
OP35330-3-21-R	Resin Hose Assembly	1
OP35330-4	Hose Bracket	1
OP35330-5	Washer	2

APPENDIX

TABLE 12. MIXING CHAMBER CLEAN OUT DRILL SPECIFICATIONS

FLAT MIXING CHAMBER	ROUND MIXING CHAMBER	MIXING CHAMBER NOZZLE CLEANOUT DRILL SIZE	MIXING CHAMBER PORT CLEANOUT DRILL SIZE
36160-1-F-00	36160-1-R-00	#56 (.0465)	#69 (.0292)
36160-1-F-01	36160-1-R-01	#53 (.0595)	#59 (.041)
36160-1-F-02	36160-1-R-02	#51 (.067)	#56 (.0465)
36160-1-F-03	36160-1-R-03	#44 (.086)	#53 (.0595)
36160-1-F-04	36160-1-R-04	#42 (.0935)	#50 (.070)
36160-1-F-05	36160-1-R-05	#31 (.120)	#44 (.086)

Field Number	Field Title	Description
1	Date	Enter date report is submitted.
2	Name	Enter name of person making report.
3	IM Number	Enter the Part Number of the Instruction Manual from the title page.
4	Issue Number	Enter the Issue number of the Instruction Manual from the title page. If there is no issue number, enter NONE .
5	Date of Issue	Enter the date of Issue of the Instruction Manual from the title page. If there is no issue date, enter NONE .
6	Page Number	Enter the page number containing the discrepancy.
7	Discrepancy	Provide a brief description of discrepancy.

NOTE: You may send a marked copy of the page as an attachment to your submittal.