

# IPM IP-02 Transfer Pump Troubleshooting and Maintenance

## Commonly occurring issues:

### Pump does not operate:

- Air supply or pressure is inadequate or the air lines are restricted; increase air pressure and check for any restrictions in the air line
- Dispensing valve is not open or it is clogged; open and/or clear valve
- Clogged fluid lines, valves, hoses, etc; follow the pressure relief procedure to clear obstruction
- Damaged air motor; service and clean the air motor (The supply pump air motor is not so different than that of an air tool. With properly lubricated you can expect better performance and life out of the air motor)
- Depleted or exhausted fluid supply; refill fluid and prime the system or flush it

### Non-stop air exhaust:

- Worn or damaged air motor, gasket, packing, seal, etc; service the air motor

### Erratic pump operation:

- Intake valve or packing's are worn; refill the fluid and prime the system
- Intake valve is not completely closed; clear the obstruction and service the pump

### Low output on the upstroke:

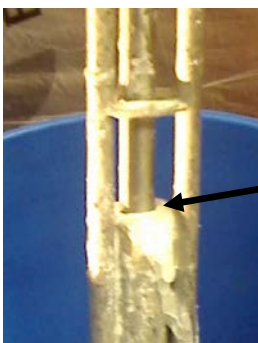
- Clogged or worn piston valve; clear the obstruction and service

### Low output on the down stroke:

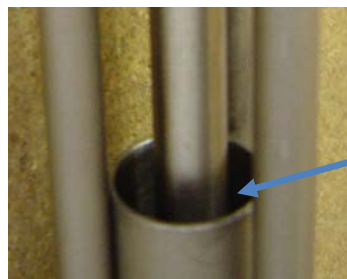
- Clogged or worn intake valve; clear the obstruction and service
- Restriction in air lines or pressure is too low; increase the air pressure or supply
- Closed or clogged valves; open or clear the valve
- Fluid supply is insufficient or exhausted; refill fluid and prime the system
- Obstructions in fluid lines, hoses, valves, etc; follow the relief procedure to clear the obstruction

### Loss or Momentary Loss of Pressure:

- Material buildup in lower section of pump frame; (see photos below)



Check for buildup in this area of the lower section of the pump frame. A buildup of material here can make the pump sluggish and even stop working.



This is the area where the pump shaft goes into the lower section of the pump. The buildup can be on the shaft as well as inside of the tube section of the frame.