

“Polyurea Flooring Application Profiles – Specifications to Coating”

Murph Mahaffey
Glas-Craft, Inc.



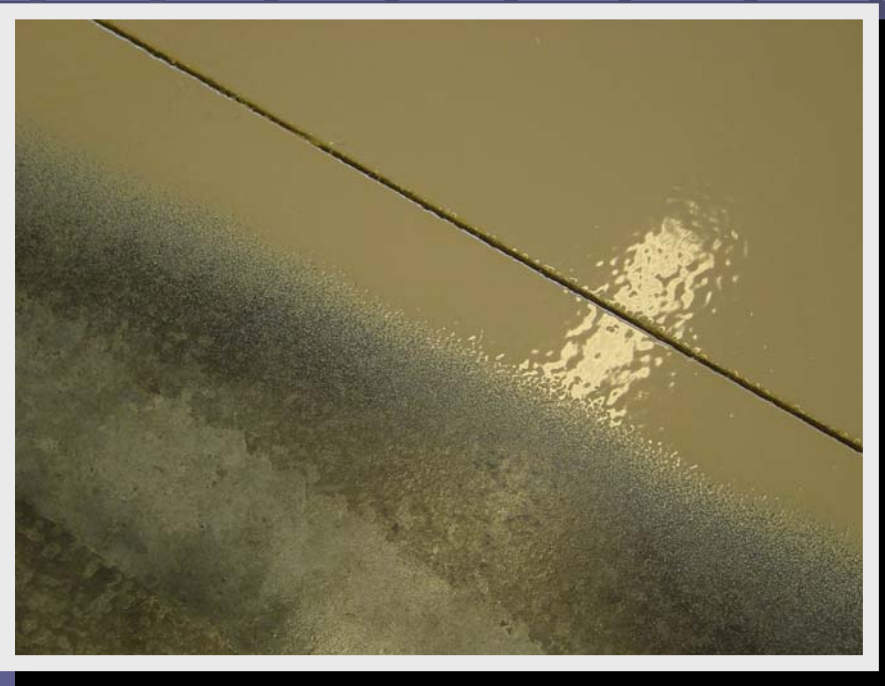
Training Center Floor Requirements



- Over Concrete Substrate
- Easy Cleaning
- Chemical Resistance
- 2400 ft.² / 223 m²

Training Center Floor Material Selection

- Epoxy
- Polyurea



Why was Polyurea Specified?



- Quick Turnaround
- Ease of Repair
- Meets Physical Requirements
- Cost

Training Center Floor Substrate Preparation

- New Floor – 3 month cure time
- Orbital Sander
- Vacuum
- Prime



Training Center Floor Application

- 60 mils / 1.5 mm Polyurea coating
- Non-Texture Surface



Training Center Floor Project Complete

- 2400 ft.² / 223 m²
prepared and coated
- 52 man-hours total
- Selected for
turnaround, cost and
performance



Pharmaceutical Lab Floor Requirements

- Existing concrete floor, strip and reseal
- Quick turnaround
- Chemical resistance
- Seamless
- Ease of repair
- Cost effective
- 1500 ft.² / 140 m²
- Ambient room and 32°F / 0°C refrigerated room



Pharmaceutical Lab Floor Material Selection

- Epoxy
- Polyurea



Why was Polyurea Specified?



- Turnaround
- Cost effective
- Ease of Repair
- Elastomeric properties
- Meets physical requirements

Pharmaceutical Lab Floor Substrate Preparation

- Sanded clean with orbital sander
- Vacuumed
- Primed
- Cracks filled



Pharmaceutical Lab Floor Application

- 60 mils / 1.5 mm polyurea coating
- Non-texture



Pharmaceutical Lab Floor Complete

- 1500 ft.² / 140 m²
prepared and coated
- 44 man-hours
 - > lab and cold room
done separately
- selected for
properties, turnaround
and cost
effectiveness



“Polyurea Flooring Application Profiles – Specifications to Coating”

Thank You...

Murph Mahaffey
Glas-Craft, Inc.



