

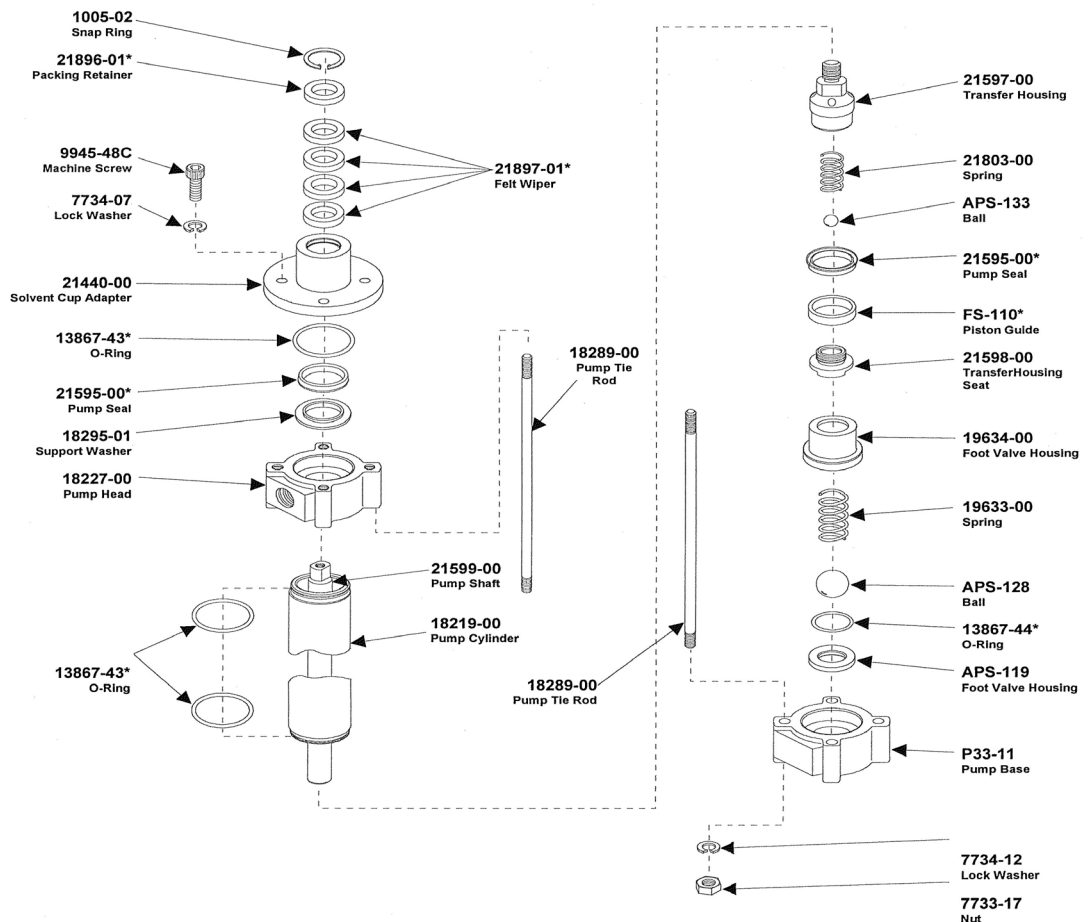
Turbo News

Volume 3, Issue 2, Summer 2005

Proportioning Pump Lubrication

Lubrication of the Proportioning pumps is one of the single most over looked maintaince procededures there is. We all know that at times you get really busy and things like this get over looked. There is only one problem with not lubing your pumps the A-Side especially. Material will harden up around the pump shaft (Item#21599-00) at the top of the Solvent Cup Adapter (Item#21440-00) and cause the pump to lockup. The way this systems are designed Glas-Craft recommends to lube the pumps once a week. Due to issues with improper lubrication of the pumps we recommend it to be lubed daily in order to assure that the system works properly. We recommend lubing the pump before start-up and after shut-down any excess will be splashed over the side of the housing and should be cleaned off during shut-down. When DOP or Pump Lube is poured into the top of the solvent cup adapter it will flow downward into the felt packings (Item#21897-01), the packings then absorb the DOP so there will be lubrication on the shaft surface at all times of system operation, but YOU must apply the DOP to the Solvent Cup Adaptor for this to work.

*If You Can Imagine
It We Can Coat It.*



Turbo liner Inc.
1 W. Cameron
Kellogg, ID 83837
Tel: 877 678 8726
Fax Acct: 208 786 0308
Fax Tech: 208 786 7606
Fax Parts: 208 786 7506
vinces@turboliner.com
markp@turboliner.com
clairem@turboliner.com
robh@turboliner.com
rayf@turboliner.com